

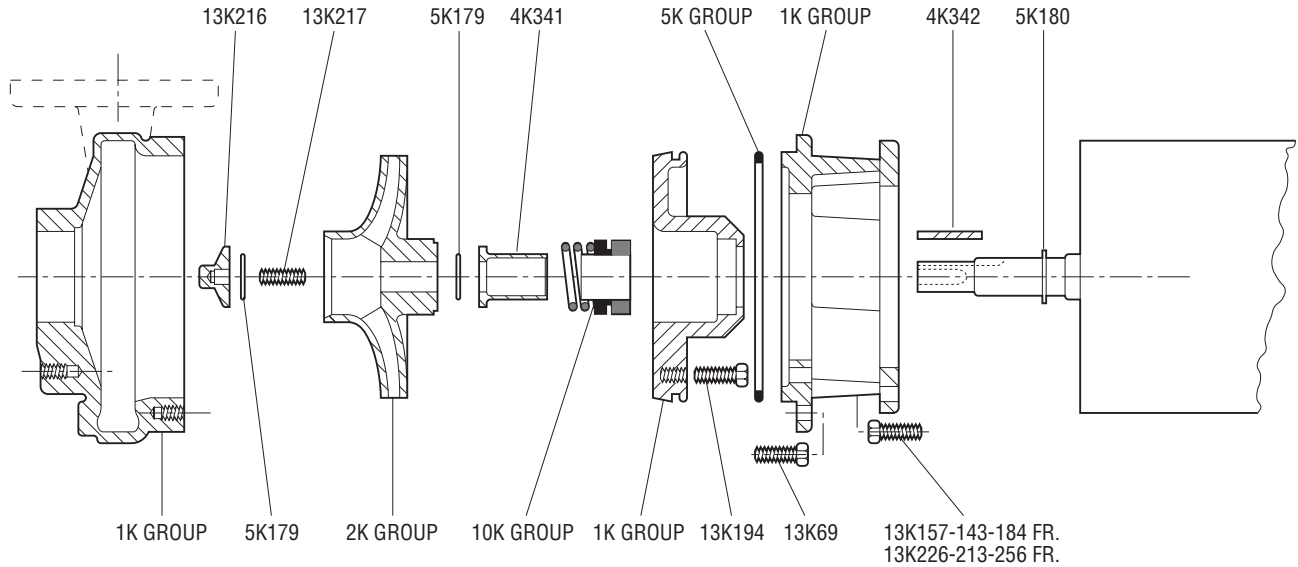
Repair Parts

MODEL



3657

Effective March, 1991



IMPELLERS

PART NO.	PART NAME	MATERIAL	PATTERN NO.
1K212	Casing 1½ x 2-6	316 SS	59184
1K213	Casing 2 x 3-7	316 SS	59185
1K214	Casing 1½ x 2-8	316 SS	59186
1K215	Seal housing 1½ x 2-6	316 SS	59181
1K216	Seal housing 2 x 3-7	316 SS	59182
1K217	Seal housing 1½ x 2-8	316 SS	59183
1K220	Motor adapter 1½ x 2-6 143-184 FR	C.I.	59176
1K221	Motor adapter 1½ x 2-6 213-215 FR	C.I.	59177
1K222	Motor adapter 2 x 3-7 143-184 FR	C.I.	59178
1K223	Motor adapter 2 x 3-7 213-254 FR	C.I.	59179
1K224	Motor adapter 1½ x 2-8 143-184 FR	C.I.	59180
1K225	Motor adapter 1½ x 2-8 213-256 FR	C.I.	59187
4K341	Shaft sleeve	316 SS	59191
4K342	Impeller key	Steel	
5K4	O-ring – 2 x 3-7	BUNA	
5K73	O-ring – 1½ x 2-6	BUNA	
5K74	O-ring – 1½ x 2-8	BUNA	
5K179	O-ring – impeller	BUNA	
5K180	O-ring – shaft sleeve	BUNA	
10K13	Mechanical seal – standard duty	Carbon/ceramic – 316 SS/BUNA	
10K19	Mechanical seal – standard duty and high temperature	Carbon/ni-resist – 316 SS/EPR	
10K25	Mechanical seal – chemical duty and high temperature	Carbon/ceramic 316 SS/VITON	
10K27	Mechanical seal – severe duty and high temperature	Carbon/tung. carbon – 316 SS/EPR	
13K157	Hex cap screw – adapter to motor 143-184 FR adapter to seal housing and casing – all	304 SS	59192
13K216	Impeller nut	316 SS	
13K217	Impeller stud	Steel	
13K226	Hex cap screw – adapter to motor – 213-256 FR	304 SS	

GROUP	PART NO.	DIAMETER — HP/ENCLOSURE
1½ x 2-6	2K297	6" 5 HP ODP – 1.15 SF and 5 HP TEFC – 1.25 SF
	2K298	5½" 5 HP TEFC – 1.0 SF
	2K299	5¼" 3 HP ODP – 1.15 SF and 3 HP TEFC – 1.25 SF
	2K300	4¾" 3 HP TEFC – 1.0 SF
2 x 3-7	2K301	7" 20 HP ODP and 20 HP TEFC – all
	2K302	6¾" 15 HP ODP – 1.15 SF and 15 HP TEFC – 1.25 SF
	2K303	6¾" 15HP TEFC – 1.0 SF
	2K304	5½" 10 HP ODP – 1.15 SF and 10 HP TEFC – 1.25 SF
	2K305	5½" 10 HP TEFC – 1.0 SF
	2K306	5½" 7½ HP ODP – 1.15 SF and 7½ HP TEFC – 1.25 SF
	2K307	5½" 7½ HP TEFC – 1.0 SF
	2K308	4½" 5 HP ODP – 1.15 SF and 5 HP TEFC 1.25 SF
	2K309	4½" 5 HP TEFC – 1.0 SF
	2K310	3¾" 3 HP ODP – 1.15 SF and 3 HP TEFC 1.25 SF
1½ x 2-8	2K311	8½" 25 HP ODP 1.15 SF and 20 HP TEFC 1.25 SF
	2K312	7¾" 20 HP ODP 1.15 SF
	2K313	7½" 15 HP TEFC 1.25 SF and 20 HP TEFC 1.0 SF
	2K314	7¼" 15 HP ODP 1.15 SF
	2K315	7" 15 HP TEFC 1.0 SF
	2K316	6½" 10 HP TEFC 1.25 SF
	2K317	6¼" 10 HP ODP 1.15 SF
	2K318	6" 7 ½ HP TEFC 1.25 SF and 10 HP TEFC 1.0 SF
	2K319	5½" 7½ HP ODP 1.15 SF
	2K320	5½" 7½ HP TEFC 1.0 SF
	2K321	5¼" 5 HP ODP 1.15 SF and 5 HP TEFC 1.25 SF