

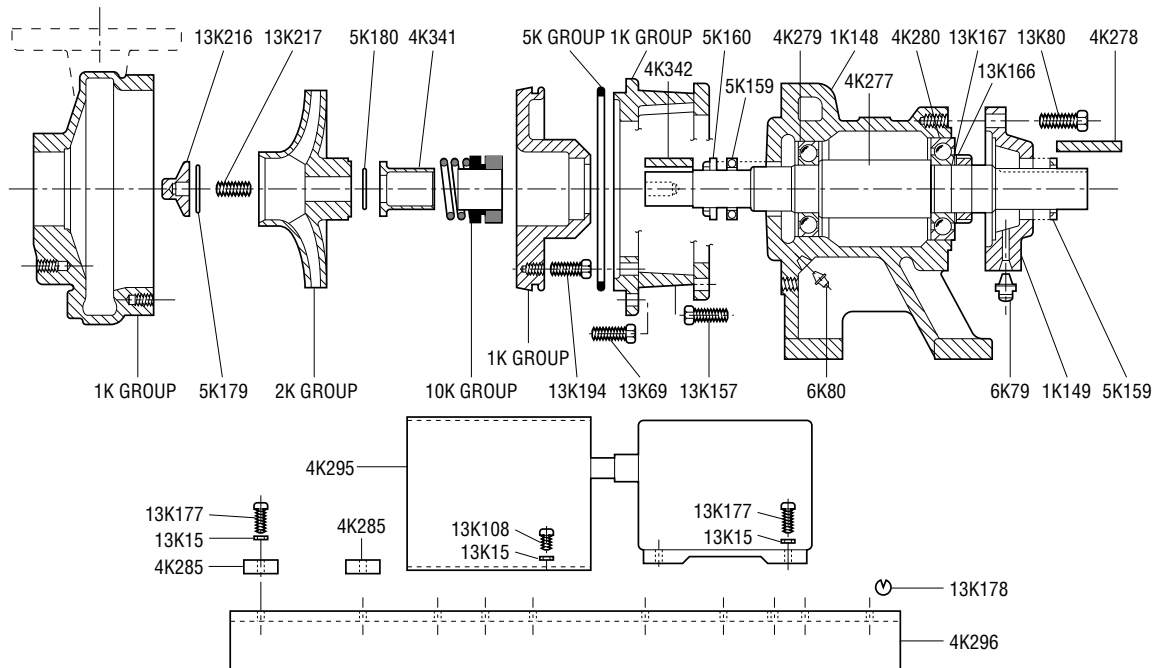
Repair Parts

MODEL



GL757

Effective October, 1987



PART NO.	PART NAME	MATERIAL	PATTERN NO.
1K148	Bearing frame	Cast iron	59026
1K149	Bearing cover	Cast iron	59027
1K212	Casing 1½ x 2-6	316 SS	59184
1K213	Casing 2 x 3-7	316 SS	59185
1K214	Casing 1½ x 2-8	316 SS	59186
1K215	Seal housing 1½ x 2-6	316 SS	59181
1K216	Seal housing 2 x 3-7	316 SS	59182
1K217	Seal housing 1½ x 2-8	316 SS	59183
1K220	Motor adapter 1½ x 2-6 143-184 FR	C.I.	59176
1K222	Motor adapter 2 x 3-7 143-184 FR	C.I.	59178
1K224	Motor adapter 1½ x 2-8 143-184 FR	C.I.	59180
4K277	Shaft – bearing frame	Steel	
4K278	Key – motor end	Steel	
4K279	Inboard bearing	Steel	
4K280	Outboard bearing	Steel	
4K285	Motor shim (180 FR only)	Cast iron	54206
4K286	Motor base (140 FR only)	Cast iron	55126
4K287	Coupling guard	Steel	
4K288	Bedplate (140 & 180 FR)	Channel 10"	
4K289	Bedplate (210 FR)	Channel 12"	
4K341	Shaft sleeve	316 SS	59191
4K342	Impeller key	Steel	
5K4	O-ring – 2 x 3-7	BUNA	
5K73	O-ring – 1½ x 2-6	BUNA	
5K74	O-ring – 1½ x 2-8	BUNA	
5K159	Lip-seal	BUNA/steel	
5K160	V-ring	BUNA-N	
5K179	O-ring – impeller	BUNA	
5K180	O-ring – shaft sleeve	BUNA	

PART NO.	PART NAME	MATERIAL	PATTERN NO.
6K80	Grease fitting – frame and bearing cover	Steel	
10K13	Mechanical seal – standard duty	Carbon/ceramic – 316 SS/BUNA	
10K19	Mechanical seal – standard duty and high temperature	Carbon/ni-resist – 316 SS/EPR	
10K25	Mechanical seal – chemical duty and high temperature	Carbon/ceramic 316 SS/VITON	
10K27	Mechanical seal – severe duty and high temperature	Carbon/tung. carbon – 316 SS/EPR	
13K15	Washer – pump coupling guard motor to bedplate		
13K80	Hex cap screw – bearing cover	Steel	
13K108	Hex cap screw – coupling guard bedplate (all models)		
13K110	Washer – motor to motor base (140 FR only)		
13K135	Hex cap screw – bearing frame to bedplate (all models)		
13K137	Hex cap screw – motor to bedplate (210 FR only)		
13K157	Hex cap screw – adapter to motor 143-184 FR adapter to seal housing		
13K166	Locknut	Steel	
13K167	Lockwasher	Steel	
13K177	Hex cap screw – motor to bedplate (180 FR only)		
13K178	Shim set		
13K179	Hex cap screw – motor to motor base (140 FR only)		
13K216	Impeller nut	316 SS	59192
13K217	Impeller stud	Steel	
AL27121	Loctite #271		