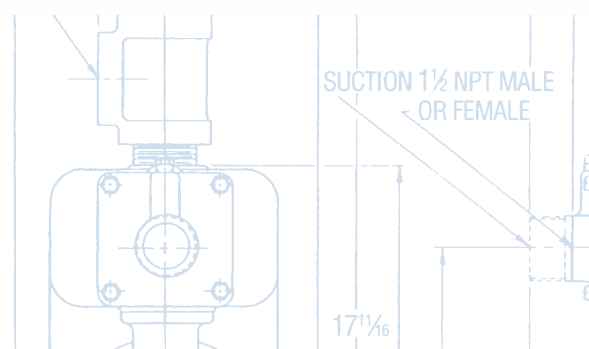
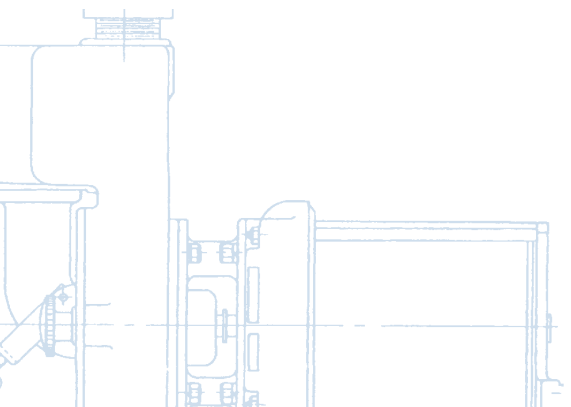
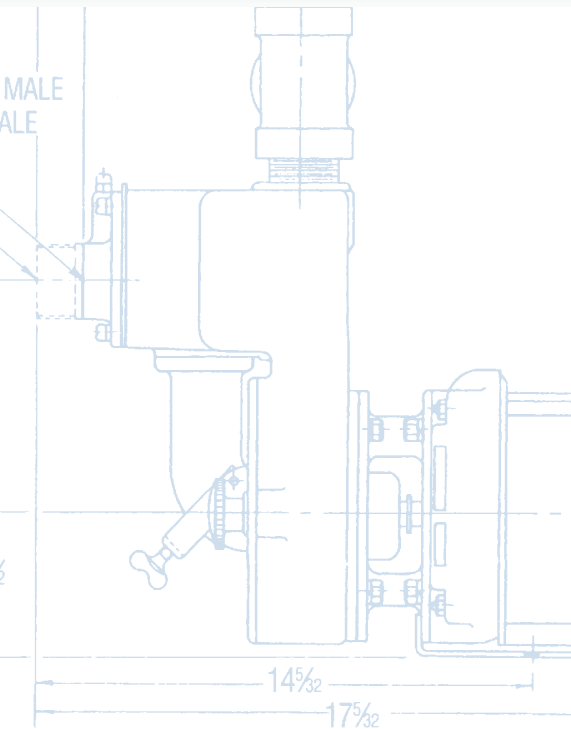
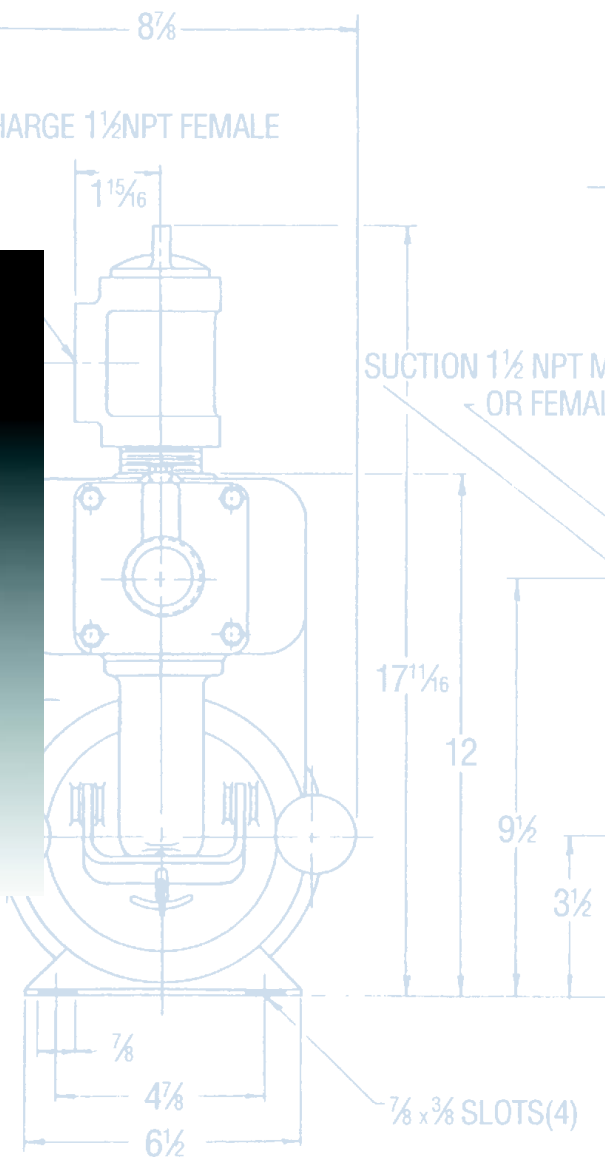


Trash Hog I

Self Priming
Solids Handling
Centrifugal
Pumps



DISCHARGE 1½ NPT FEMALE



Trash Hog I A Full Range of Product Features

Rugged Construction: Cast iron construction with replaceable volute, 1½" NPT wing type fill plug and suction gauge top.

Solids Handling: 2 vane open impeller for handling up to 3" spherical solids. Impeller is locked to shaft for anti-rotation.

Suction Check Valve: Built-in-preloaded suction check valve with "easy off" suction elbow design.

Wear Plate: Replaceable wear plate included as standard on larger models.

Quick Cleaning: Easily removable cover plate allows fast access to the liquid chamber.

Self Priming: Suction lifts up to 25' depending on model and duty point.

Configuration Option: Available as close coupled or frame mounted with mechanical seal or packing.

Trash Hog Product Line Numbering System

The various versions of the Trash Hog I are identified by a product code on the pump label. This number is also the catalog number for the pump. The meaning of each digit in the product code number is shown below. Not all combinations are possible. Consult your G&L distributor for specific requirements.

Example Product Code

1TH EC 1 A 2 A 0

Seal Type

Seal Code	Rotary	Stationary	Elastomers	Spring
0	Carbon	Ceramic	BUNA	Stainless
1*	Carbonized Acrylic Yarn Packing			

* Not available on 1TH model.

Impeller

A = Standard

Driver

1 = 1PH, ODP	4 = 1PH, TEFC	7 = 3PH, XP
2 = 3PH, ODP	5 = 3PH, TEFC	8 = 575 V, XP
3 = 575 V, ODP	6 = 575 V, TEFC	9 = 3PH, XP

Horsepower Rating

A = 1	D = 3	G = 10
B = 1½	E = 5	H = 15
C = 2	F = 7½	

Driver: Hertz/Pole/RPM

1 = 60 Hz, 2 pole, 3500 RPM
 2 = 60 Hz, 4 pole, 1750 RPM
 3 = 60 Hz, 6 pole, 1150 RPM

Type

EC = Close Coupled
 EL = Long Coupled

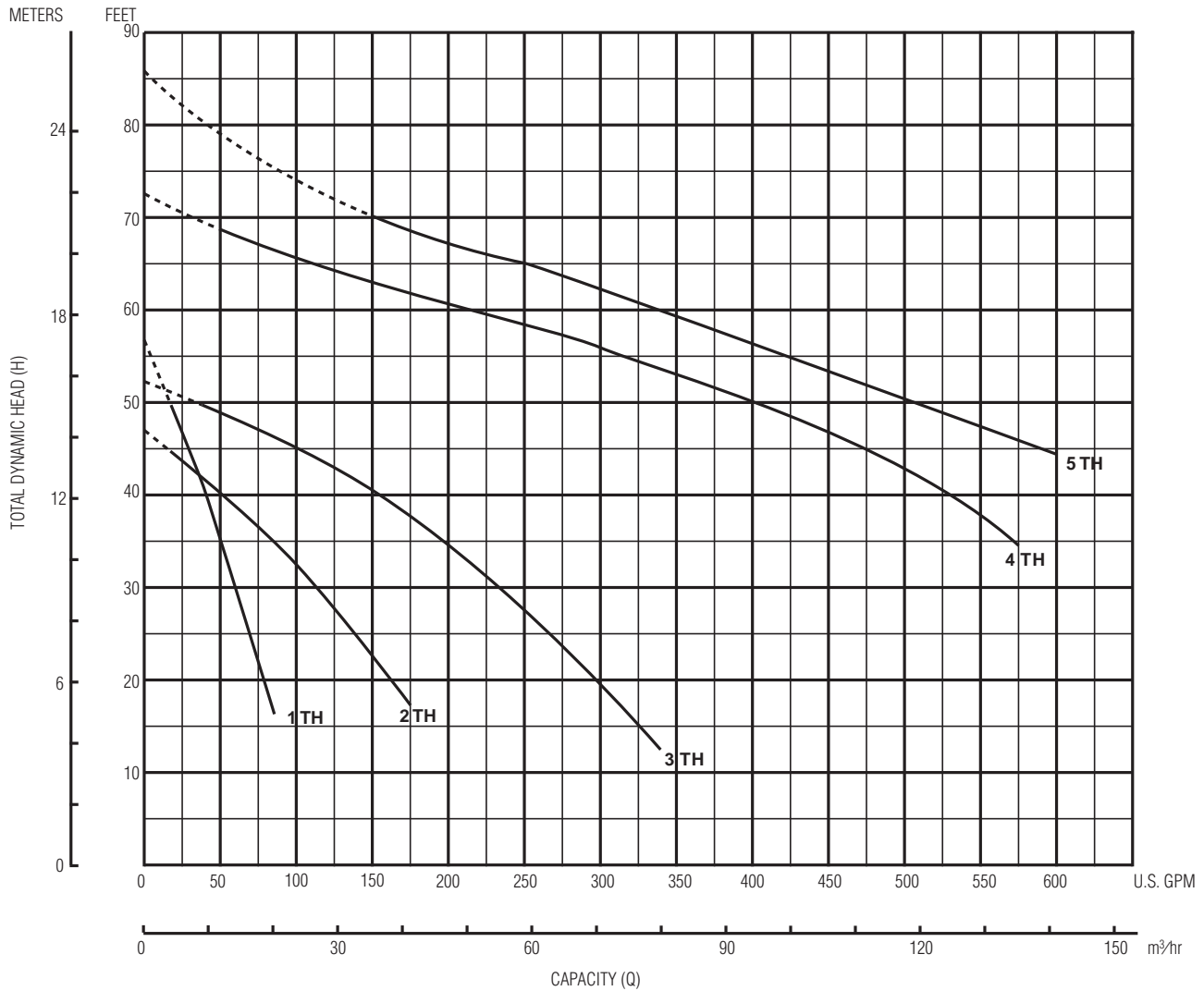
Pump Size (Port/ Solids)

1TH= 1½ / 1
 2TH= 2 / 1½
 3TH= 3 / 1½
 4TH= 4 / 2
 5TH= 4 / 3

Typical Applications

- Waste water
- Effluent
- Sump services
- Solid laden waste
- Sewage
- Sludges
- Drainage
- General agricultural

Trash Hog I Performance Coverage



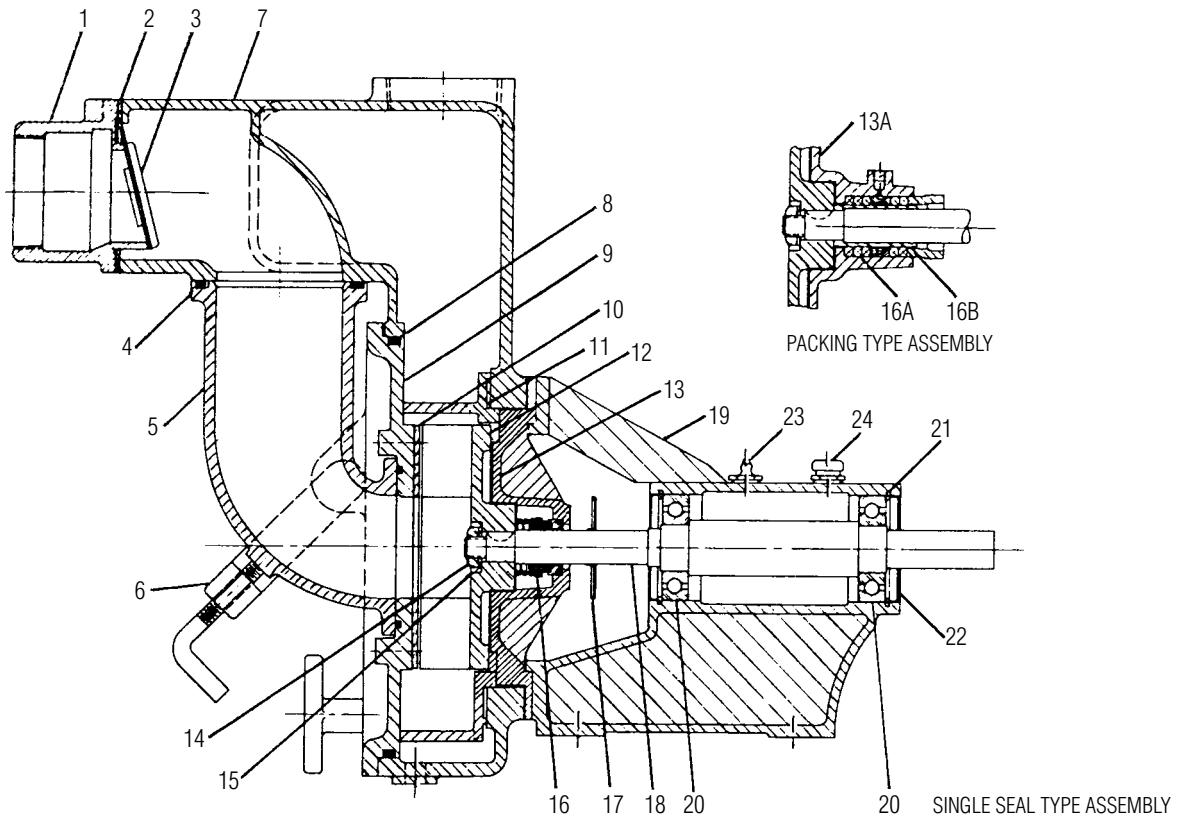
NOTE: 1TH pump speed 3450 RPM, all others 1750 RPM.

Trash Hog I Specifications

Pump Size	Spherical Solids		Part Sizes		Seal Type Available		Speed		Static Priming*	
	Inches	cm	Inches	cm	Mechanical	Packed	Typical	Maximum	Feet	Meters
1TH	1	2.5	1.5	3.5	x	—	3450	5000	25	7.6
2TH	1.5	3.8	2	5.1	x	x	1750	2400	25	7.6
3TH	1.5	3.8	3	7.6	x	x	1750	2500	23	7.0
4TH	2	5.1	4	10.2	x	x	1750	2400	25	7.6
5TH	3	7.6	4	10.2	x	x	1750	2000	20	6.1

* Based on nominal pipe sizes with 5 feet of horizontal length and 0 discharge.

Trash Hog I Materials of Construction – Frame Mounted

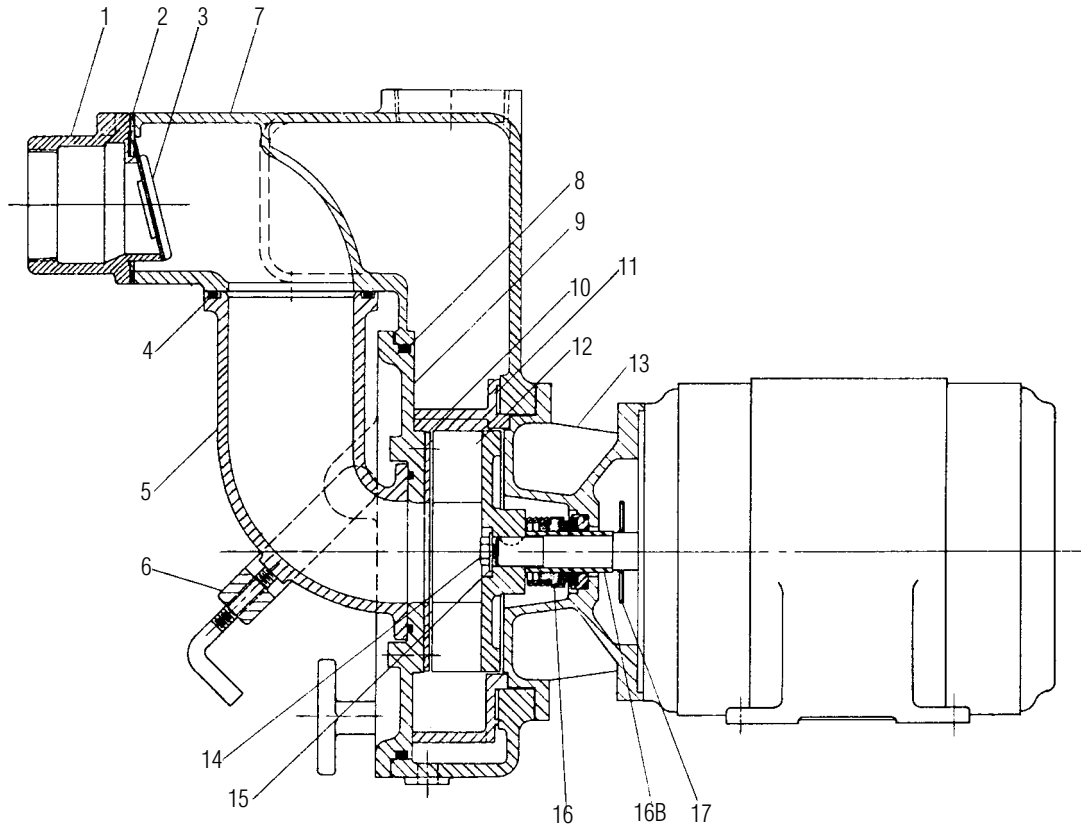


Item No.	Description	Materials
1	Suction Inlet	Cast Iron
2 and 3	Suction Check Valve	Rubber and Cast Iron
4	Suction EI Gasket	BUNA-N
5	Suction EI	Cast Iron
6	Suction EI Yoke – Assembly	Cast Iron with Steel Hardware
7	Tank	Cast Iron
8	Suction Cover Gasket	Synthetic O-ring
9	Suction Cover Plate	Cast Iron
10	Suction Wear Plate*	Cast Iron
11	Volute	Cast Iron
12	Two Vaned Impeller	Cast Iron
13	Seal Plate	Cast Iron
13A	Packing Plate	Cast Iron

Item No.	Description	Materials
14	Impeller Lock Nut*	Steel
15	Impeller Lock Washer*	Spring Steel
16	Mechanical Seal	Carbon, Ceramic, SS and BUNA-N
16A	Packing and Lantern Ring*	Asbestos and Bronze
16B	Shaft Sleeve*	Stainless Steel
17	Shaft Slinger	Steel, except SS on 1THEL
18	Shaft	Steel
19	Lantern Frame and Bearing Housing	Cast Iron
20	Double Shield Single Row Ball Bearing	
21	Bearing Locking Rings	Spring Steel
22	Dust Caps	Steel
23	Alermit Grease Fittings	Plated Steel
24	Vent and Breather	Plated Steel

* Not offered on 1TH Model.

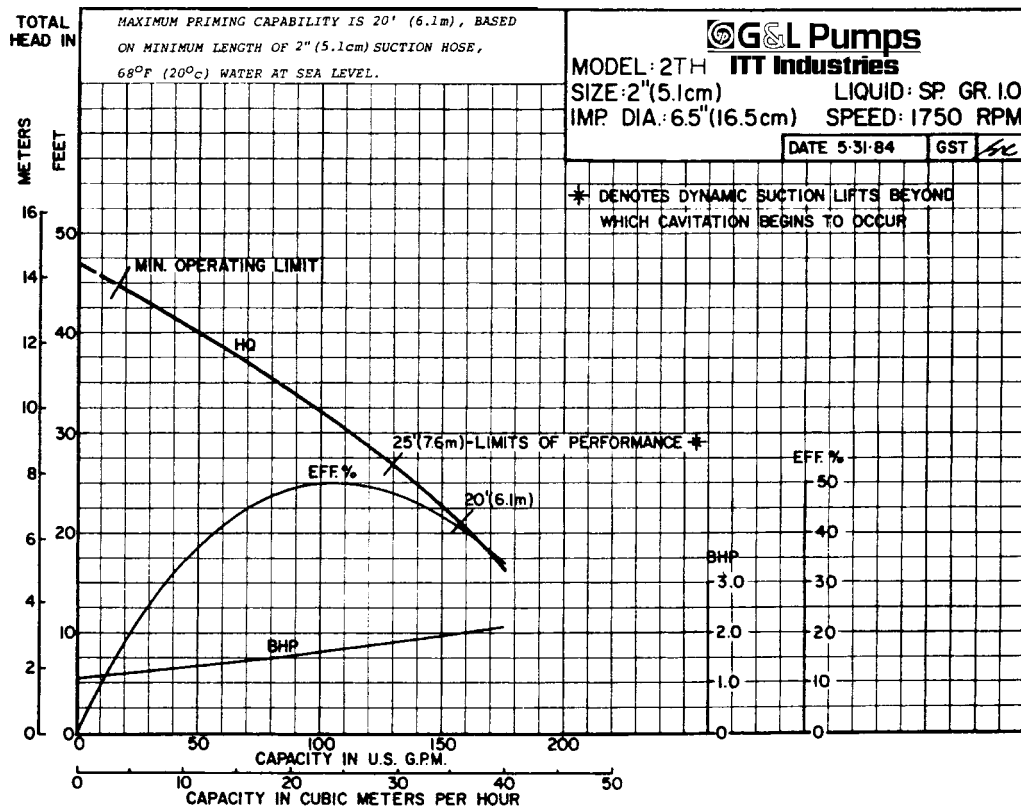
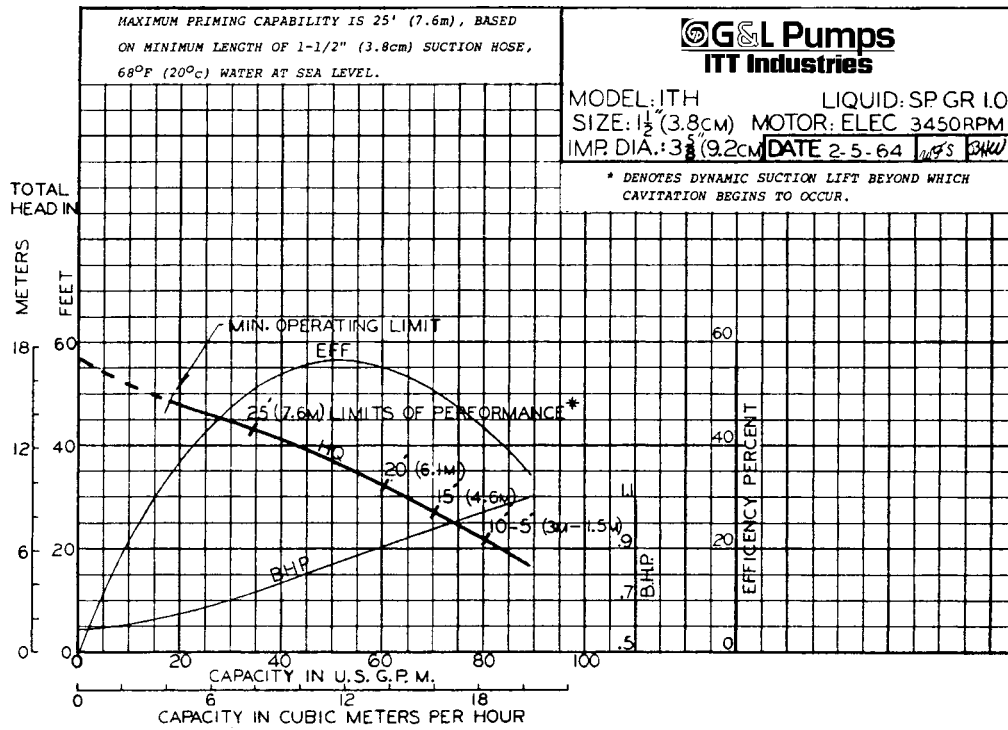
Trash Hog I Materials of Construction – Close Coupled



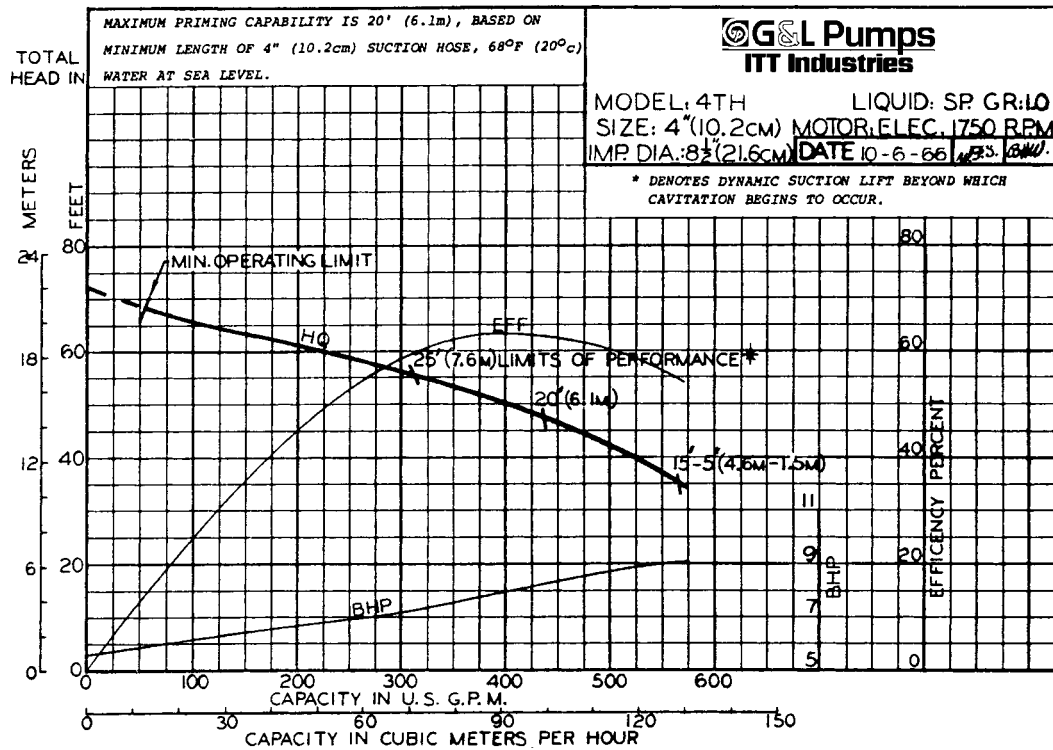
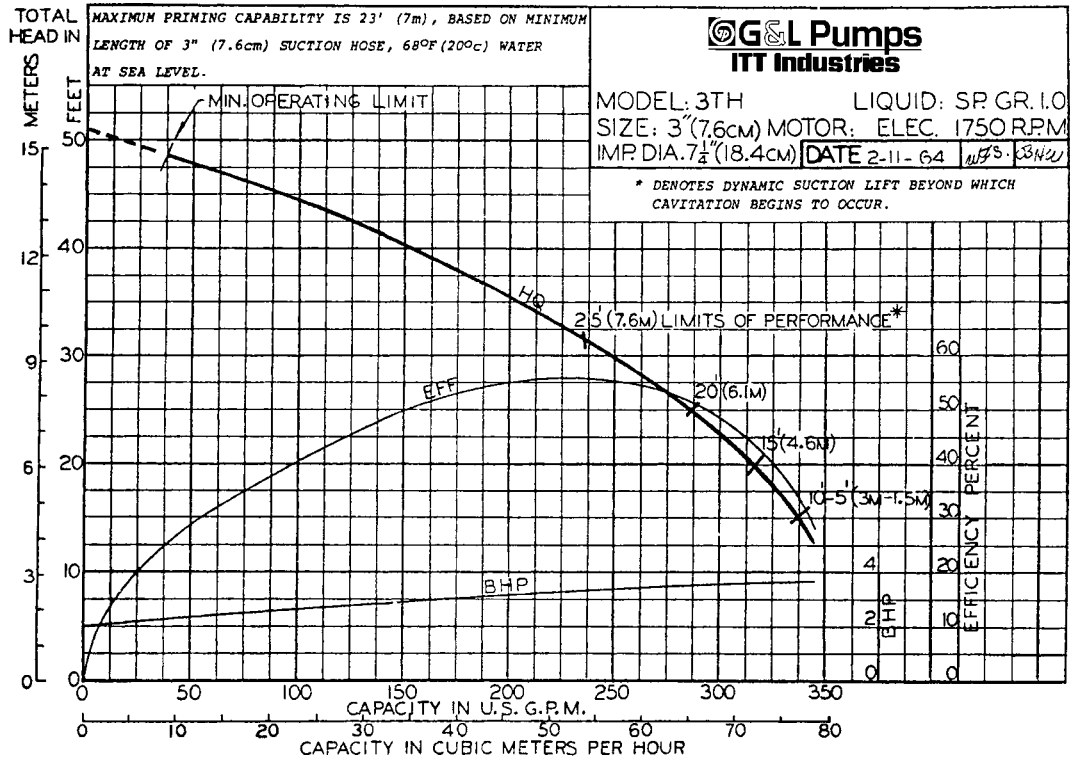
Item No.	Description	Materials
1	Suction Inlet	Cast Iron Female Thread
2 and 3	Suction Check Valve	Rubber and Cast Iron
4	Suction EI Gasket	BUNA-N
5	Suction EI	Cast Iron
6	Suction EI Yoke – Assembly	Cast Iron with Steel Hardware
7	Tank	Cast Iron
8	Suction Cover Gasket	Synthetic O-ring
9	Suction Cover Plate	Cast Iron
10	Suction Wear Plate	Cast Iron
11	Volute	Cast Iron
12	Two Vane Solids Handling Impeller	Cast Iron
13	Combination Seal Plate and Lantern	Cast Iron
14	Impeller Lock Nut	Steel
15	Impeller Lock Washer	Steel
16	Mechanical Shaft Seal	Carbon, Ceramic, SS and BUNA-N
17	Shaft Sleeve	Bronze*
18	Shaft Slinger	Steel

* Offered on 3TH only.

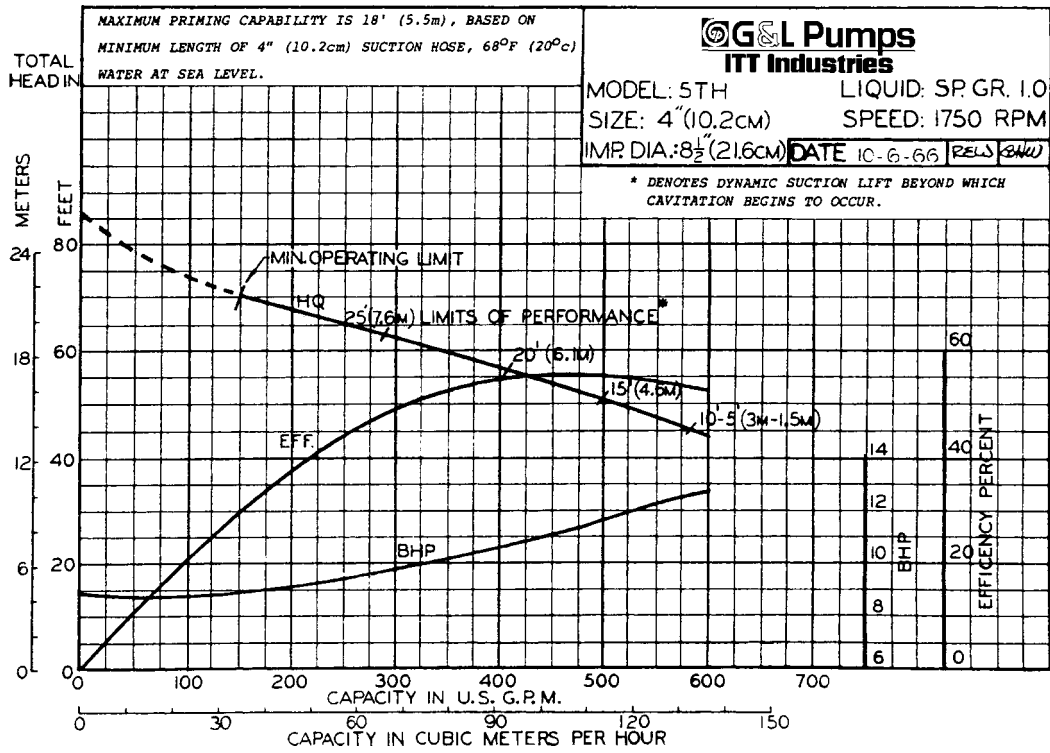
Trash Hog I Performance Curves – 60 Hz



Trash Hog I Performance Curves – 60 Hz



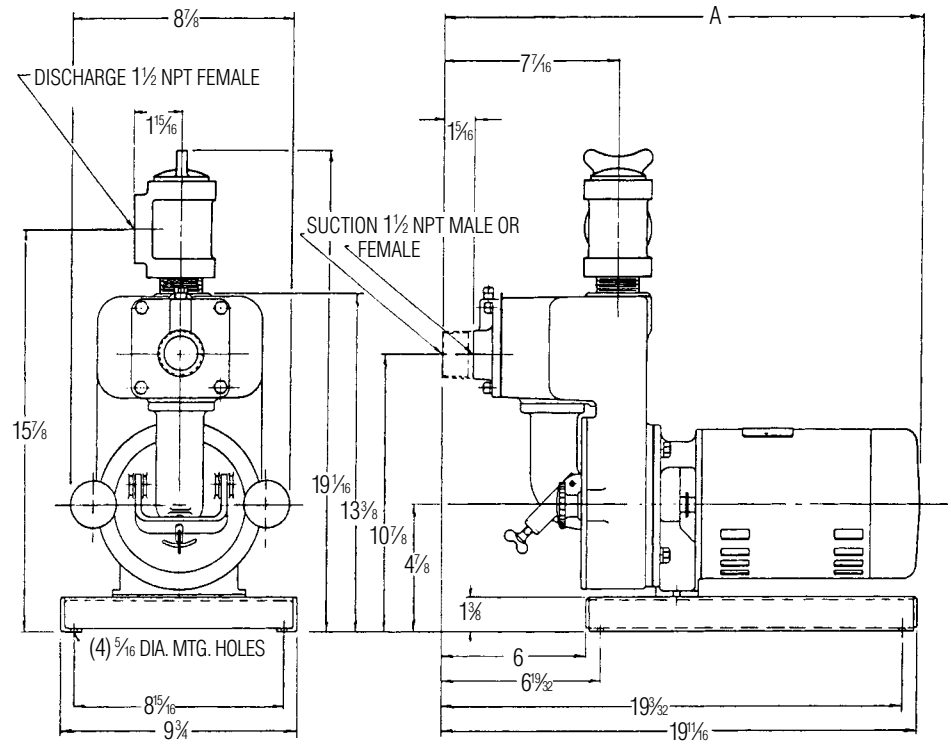
Trash Hog I Performance Curves – 60 Hz



Trash Hog I Dimensions – Close Coupled Pumps Pump Units with Open Motors

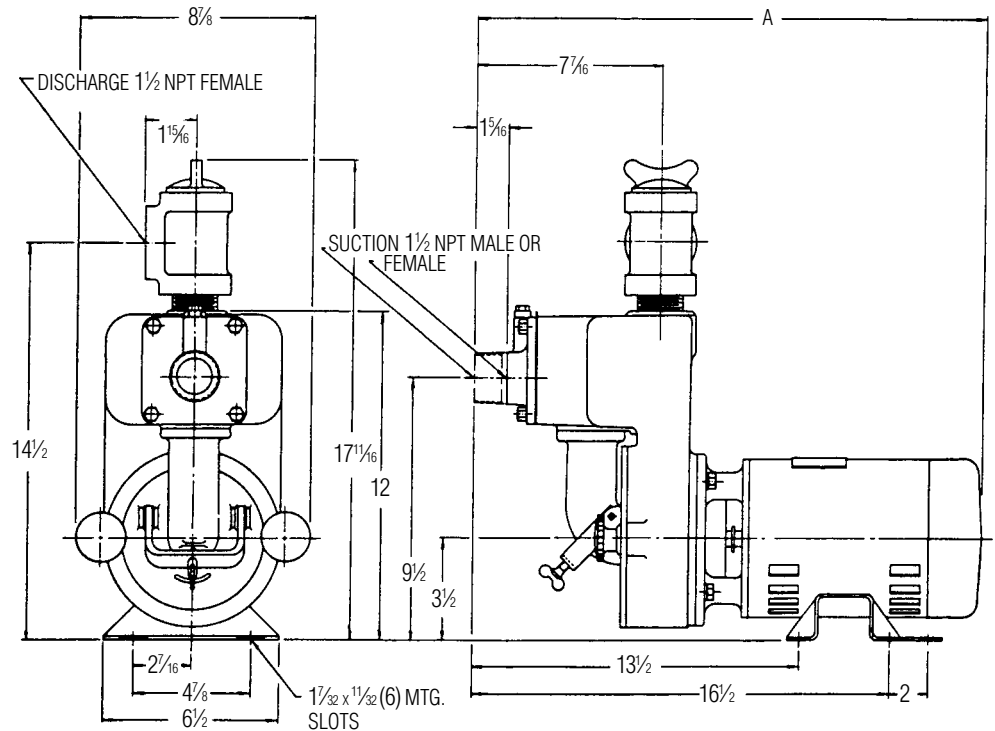
ITHEL with Base

Motor	A	
1HP	1Ø	20 ⁵ / ₈
	3Ø	20 ⁵ / ₈



ITHEL without Base

Motor	A	
1 ¹ / ₂ HP	1Ø	20 ⁵ / ₈
	3Ø	21 ⁵ / ₈

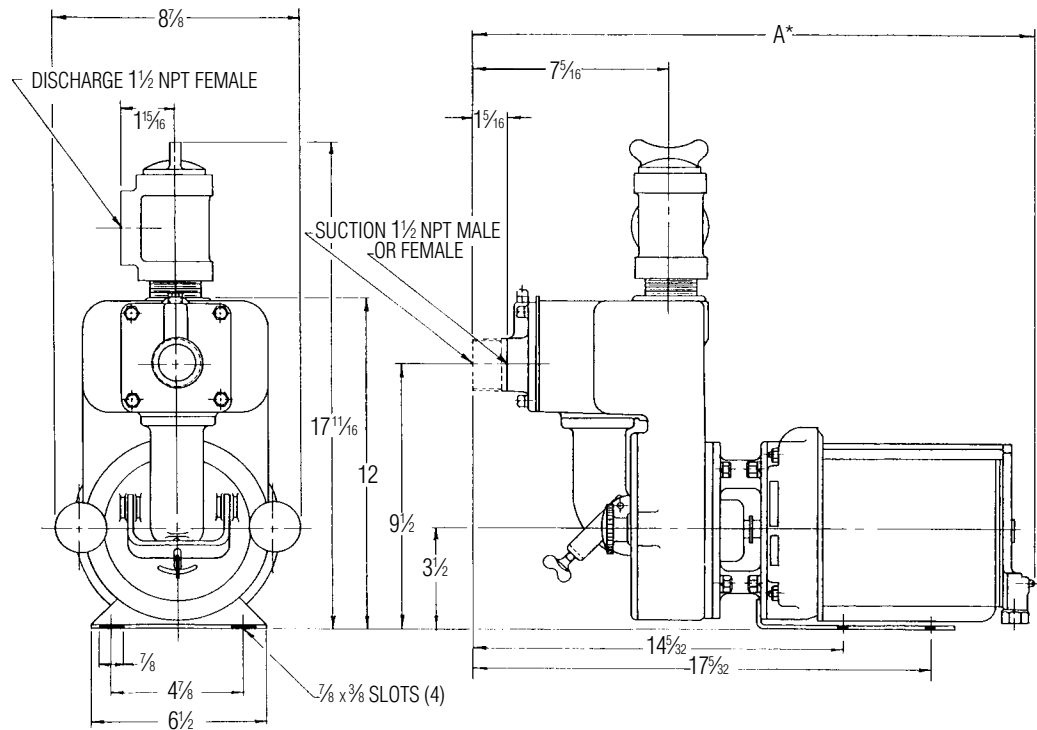


Dimensions in inches and based on A.O. Smith motors. Do not use for construction purposes.

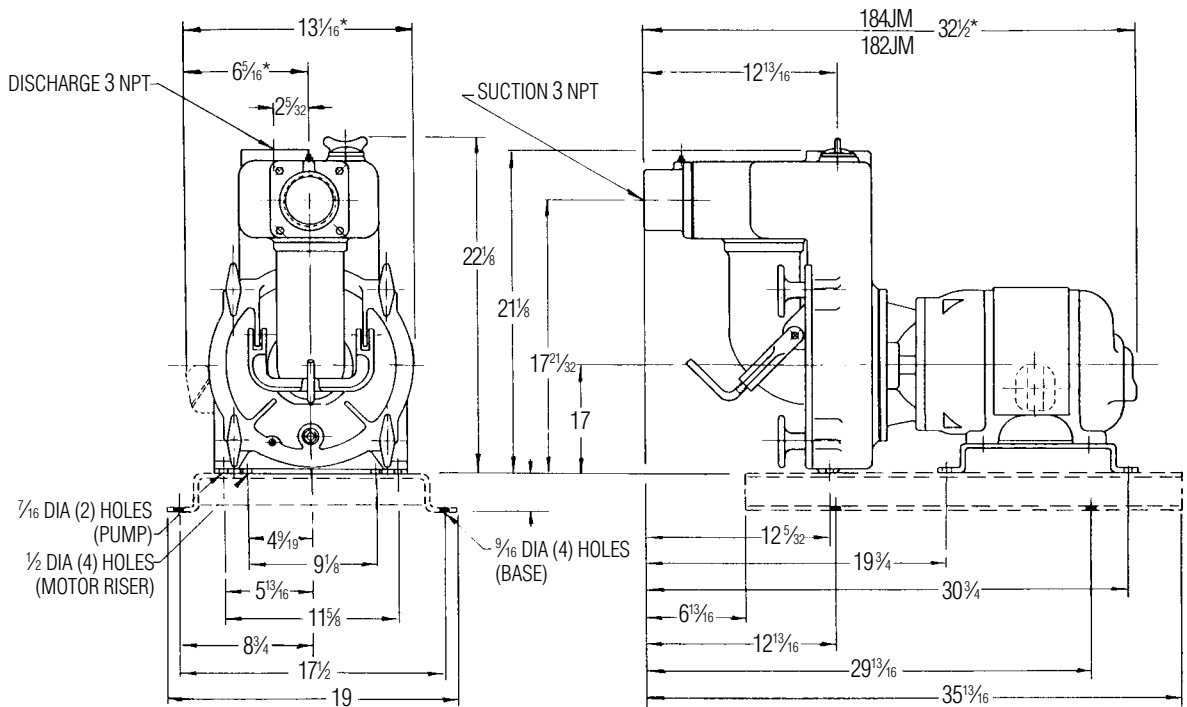
Trash Hog I Dimensions – Close Coupled Pump Pump Units with Explosion Proof Motors

ITHEC without Base

Motor		A
1HP	1Ø	23 ³ / ₈
	3Ø	20 ¹ / ₄
1 ¹ / ₂ HP	1Ø	24 ⁷ / ₁₆
	3Ø	21 ²³ / ₃₂



3THEC with Base

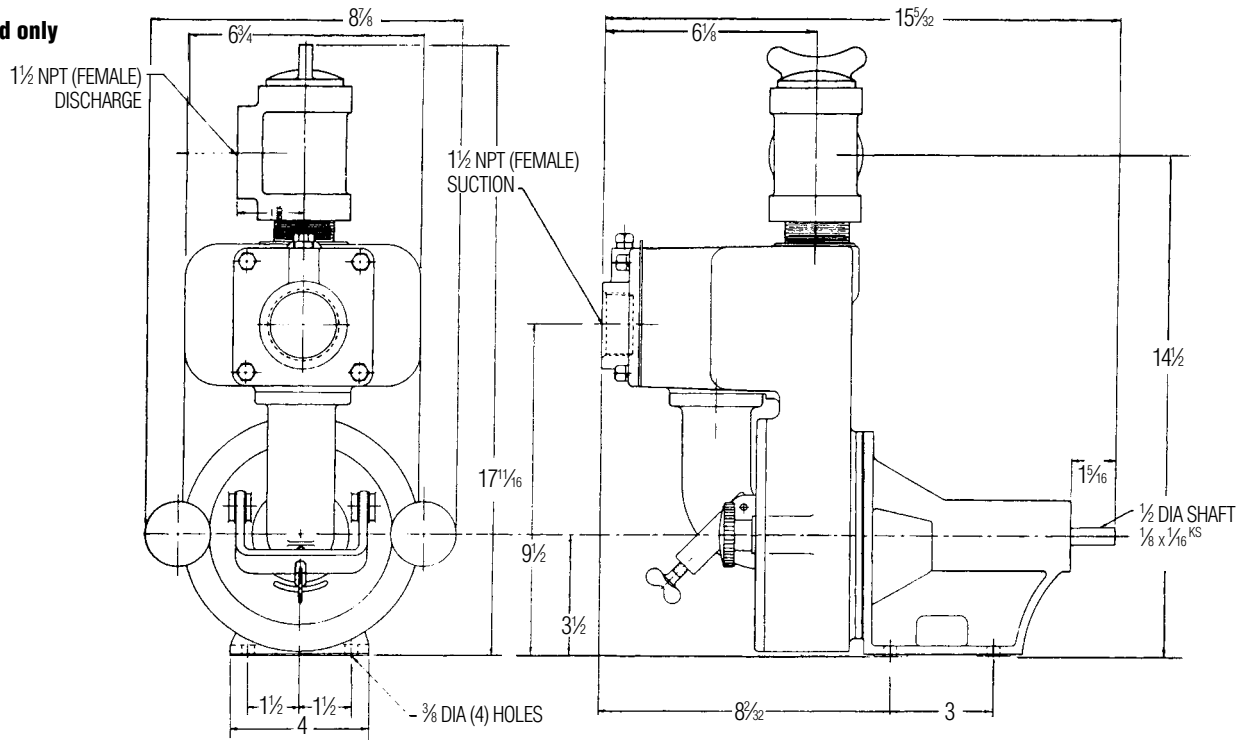


Dimensions in inches. Do not use for construction purposes.

* Dimensions may vary depending on motor manufacturer.

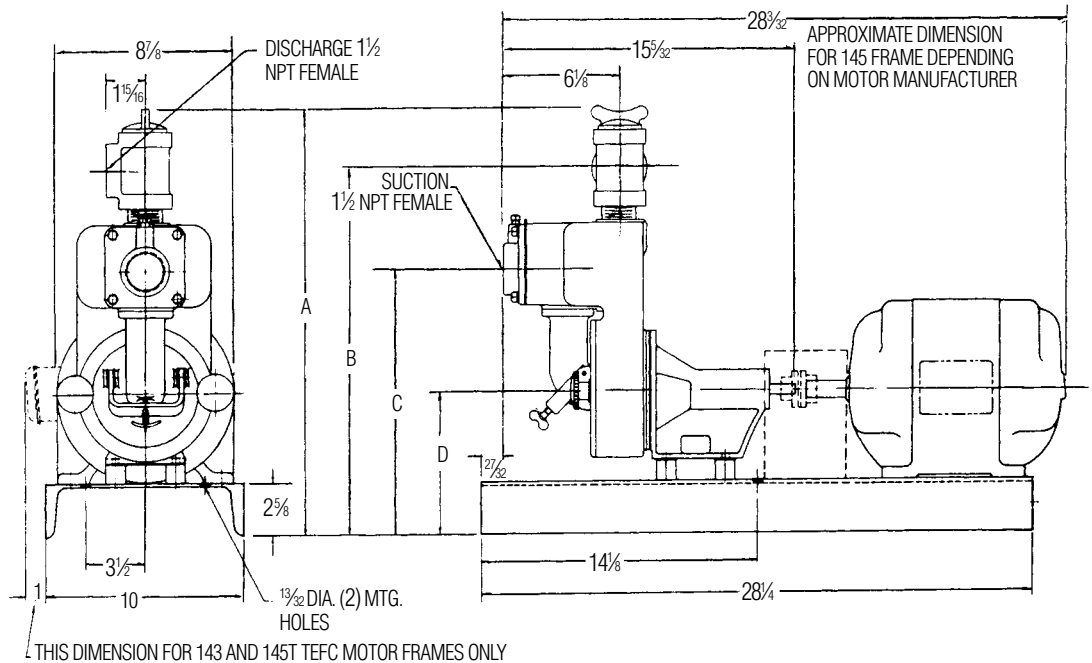
Trash Hog I Dimensions – Frame Mounted Pumps

ITHEL – Pump End only



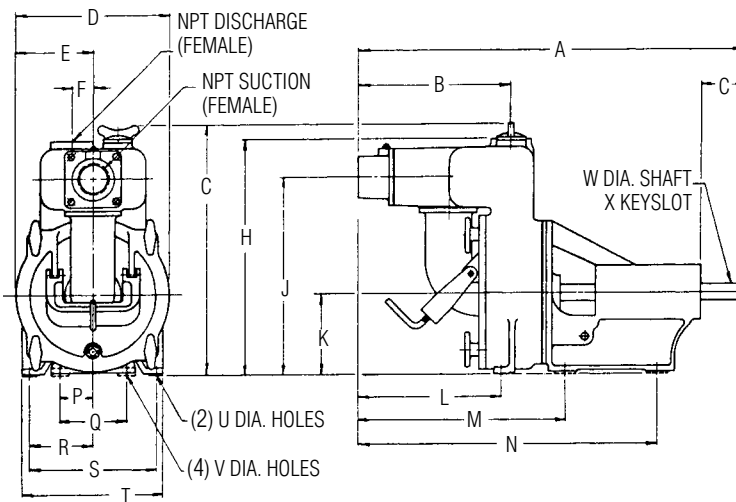
ITHEL with Base Plate

FRAME	A	B	C	D
56	$20\frac{5}{16}$	$17\frac{1}{8}$	$12\frac{1}{8}$	$6\frac{1}{8}$
66	$20\frac{15}{16}$	$17\frac{3}{4}$	$12\frac{3}{4}$	$6\frac{3}{4}$
143T	$20\frac{5}{16}$	$17\frac{1}{8}$	$12\frac{1}{8}$	$6\frac{1}{8}$
145T				



Dimensions in inches and may vary depending on motor manufacturer. Do not use for construction purposes.

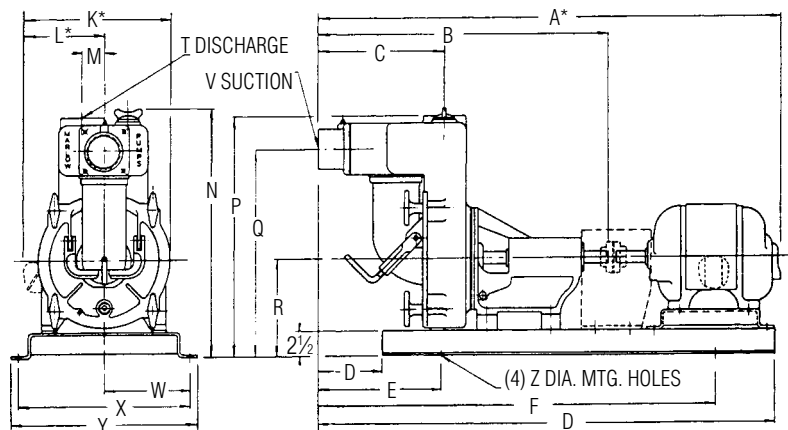
Trash Hog I Dimensions – Frame Mounted Pumps



*For packing pump add 2²¹/₃₂" to A, M, and N dimensions.

2THEL through 5THEL – Pump End only

Model	Suct.	Disc.	A	B	C	D	E	F	G	H	J	K	L	M	N	P	Q	R	S	T	U	V	W	X
2TH	2	2	27 ¹ / ₁₆	11	2 ¹³ / ₁₆	10 ⁷ / ₁₆	5 ¹ / ₁₆	1 ¹ / ₂	17 ¹ / ₁₆	16 ¹³ / ₁₆	14	5 ³ / ₄	10 ¹⁰ / ₁₆	14 ¹ / ₁₆	21 ¹ / ₁₆	2 ² / ₁₆	4 ³ / ₄	4 ¹ / ₂	9	10		7 ¹ / ₁₆	1 ¹ / ₁₆	1 ¹ / ₄ x 1 ¹ / ₈
3TH	3	3	29 ⁹ / ₁₆	12 ¹³ / ₁₆		13 ¹ / ₂	6 ³ / ₄	2 ³ / ₁₆	22 ¹ / ₁₆	21 ¹ / ₁₆	17 ¹¹ / ₁₆	7	12 ¹² / ₁₆	17 ¹ / ₁₆	23 ³ / ₁₆			5 ¹³ / ₁₆	11 ¹ / ₁₆	12 ² / ₁₆	7 ¹ / ₁₆		1 ¹ / ₁₆	
4TH and 5TH	4	4	36 ³ / ₁₆	11	3	16	8	3 ³ / ₁₆	26 ³ / ₄	25 ³ / ₄	21 ¹ / ₂	8	15 ¹¹ / ₁₆	24 ¹ / ₄	33 ³ / ₄	4 ¹ / ₄	9 ¹ / ₂	6 ³ / ₄	13 ¹ / ₂	15		1 ¹ / ₁₆	1 ¹ / ₁₆	5 ¹ / ₁₆ x 3 ³ / ₃₂



*Dimensions may vary depending on motor manufacturer.
**For packing pump add 2²¹/₃₂" to A, and B dimensions.

2THEL through 5THEL with Base Plate

Model	HP	RPM	Frame	A	B	C	D	E	F	G	K	L	M	N	P	Q	R	T	V	W	X	Y	Z	
2TH	2	1750	145T	40 ¹ / ₁₆							10 ¹⁰ / ₁₆	5 ⁷ / ₁₆												
	7 ¹ / ₂	3450	184T	42 ⁷ / ₁₆	27 ¹ / ₁₆	11	9	12	35 ¹ / ₁₆	43	12 ¹ / ₁₆	7 ¹ / ₁₆	1 ¹ / ₂	20 ¹ / ₁₆	19 ⁹ / ₁₆	16 ¹ / ₂	8 ¹ / ₄	2	2	7	14	15 ¹ / ₂	3 ¹ / ₄	
	10		213T	44							13 ¹¹ / ₁₆	8 ¹ / ₄												
3TH	3	1750	182T	44																				
	5		184T	45	29 ⁹ / ₁₆	12 ¹³ / ₁₆	6 ³ / ₁₆	12 ¹⁵ / ₁₆	40 ¹ / ₁₆	46 ¹⁵ / ₁₆	14 ³ / ₁₆	2 ⁷ / ₁₆	2 ²⁹ / ₃₂	24 ³ / ₁₆	23 ³ / ₁₆	20 ⁵ / ₃₂	9 ¹ / ₂	3	3					
4TH and 5TH**	3	1150	213T	53 ³ / ₁₆							16 ¹ / ₄	8 ¹ / ₄												
	5		215T	54 ¹ / ₁₆							17 ¹ / ₁₆	9 ¹ / ₁₆									8 ³ / ₄	17 ¹ / ₂	19	9 ¹ / ₁₆
	7 ¹ / ₂	1750	213T	53 ³ / ₁₆	36 ¹ / ₁₆	15 ¹ / ₁₆	15 ¹ / ₁₆	21 ¹ / ₁₆	56 ¹ / ₁₆	62 ¹ / ₁₆	16 ¹ / ₄	8 ¹ / ₄	3 ³ / ₁₆	29 ¹ / ₄	28 ¹ / ₄	24	10 ¹ / ₂	4	4					
	10		215T	54 ¹ / ₁₆							17 ¹ / ₁₆	9 ¹ / ₁₆												
	15		254T	57 ¹ / ₁₆								18 ¹ / ₁₆	10 ¹ / ₁₆											

Dimensions in inches. Do not use for construction purposes.