

Repair Parts

MODEL

25VB

25VB NUMBERING SYSTEM

The various versions of the Series VB are identified by a product code number on the pump label. This number is also the catalog number for the pump. The meaning of each digit in the product code number is shown below. The following are the standard product numbers and are built with Three Phase TEFC motors and standard staging and seal options.

| Order No. | | Description | | | | |
|-------------|-------------|-------------|-------|---------|-----------|--------|
| Cast Iron | Stainless | HP | Phase | Voltage | Enclosure | Stages |
| 25VBC1015E4 | 25VBS1015E4 | 1 | 3 | 230-460 | TEFC | 5 |
| 25VBC1515G4 | 25VBS1515G4 | 1½ | | | | 7 |
| 25VBC2015J4 | 25VBS2015J4 | 2 | | | | 9 |
| 25VBC3015N4 | 25VBS3015N4 | 3 | | | | 13 |

VB NUMBERING SYSTEM

For optional seals configurations use the following product code system.

Example Product Code 25VBC1015E4

25 VB C 10 1 5 E 4

MECHANICAL SEAL AND O-RING

4 = Standard on Cast Iron or Stainless Steel.

For Optional Mechanical Seal modify catalog order no. with Seal Code listed below.

| John Crane Mechanical Seal (5/8" seal) | | | | | | |
|--|--------|-------------|------------|-------------|----------|---------------|
| Seal Code | Rotary | Stationary | Elastomers | Metal Parts | Part No. | Casing O-Ring |
| 2 | Carbon | Ceramic | BUNA | 316SS | 10K46 | BUNA |
| 3 | | Sil-Carbide | EPR | | 10K18 | EPR |
| 4 | | Ceramic | Viton | | 10K24 | Viton |
| 5 | | Sil-Carbide | Viton | | 10K55 | Viton |

NUMBER OF STAGES

E = 5 J = 9

G = 7 N = 13

DRIVER

5 = 3 PH, TEFC

DRIVER: HERTZ/POLE/RPM

1 = 60 Hz, 2 pole, 3500 RPM

HP RATING

10 = 1 HP 20 = 2 HP

15 = 1½ HP 30 = 3 HP

MATERIAL – DISCHARGE HEAD AND SUCTION HOUSING

C = Cast Iron

S = Stainless Steel

PUMP MODEL

VB

GALLONS PER MINUTE

25

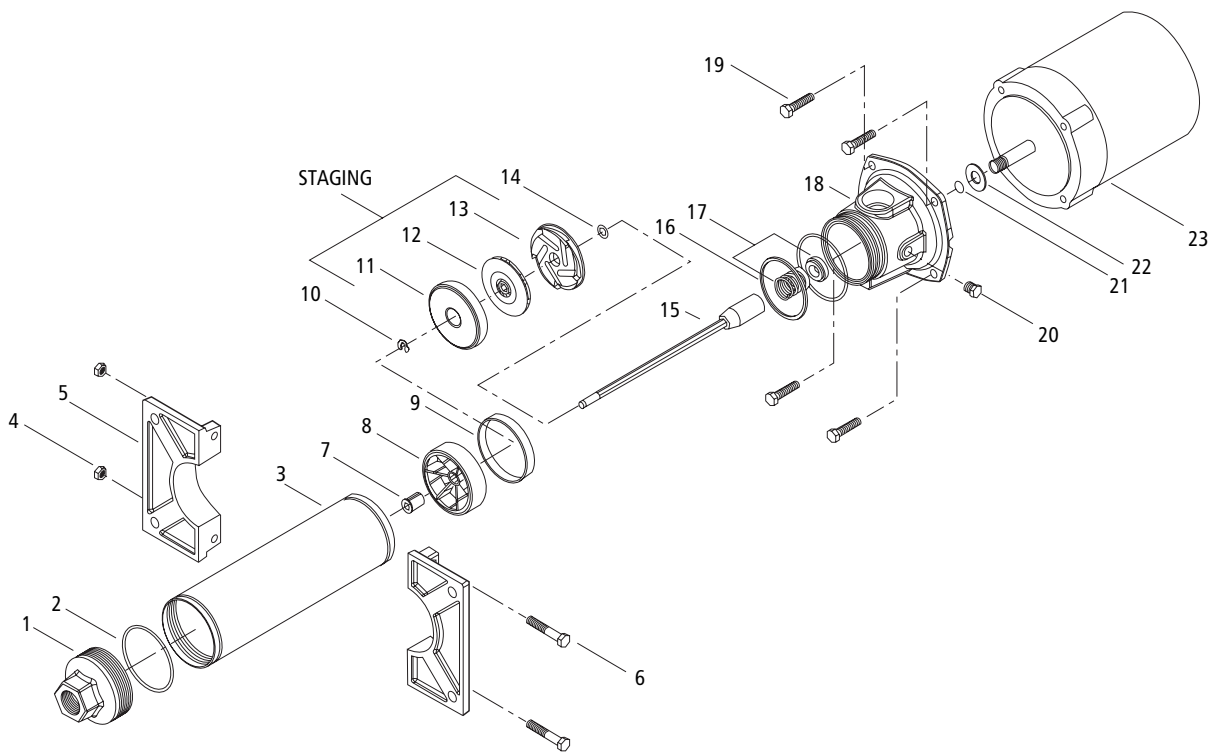
Note: Not recommended for operation beyond recommended range specified on H-Q curve.

For critical application conditions consult factory.

Note: Not all combinations of motor, impeller and seal options are available for every pump model. Please check with Goulds Pumps on non-cataloged numbers.

25VB STANDARD REPAIR PARTS LIST

| | | | | HP | Model VB25 Number of Stages | | |
|----------|-------------------------------|----------------|--|--------|-----------------------------------|-------------|--------|
| | | | | 1 | 5 | | |
| | | | | 1½ | 7 | | |
| | | | | 2 | 9 | | |
| | | | | 3 | 13 | | |
| Item No. | Description | | Material | QTY. | HP | Part Number | |
| 1 | Discharge Head | | Cast Iron | 1 | All | 1K343 | |
| | | | 304 SS | | | 1K347 | |
| 2 | O-Ring Casing | Standard BUNA | 2 | 5K225 | | | |
| | | Optional EPR | | 5K281 | | | |
| | | Optional Viton | | 5K282 | | | |
| 3 | Casing | | 304 SS | 1 | | 1 | 7K1788 |
| | | | | | | 1½ | 7K1789 |
| | | | | | | 2 | 7K1790 |
| | | | | | | 3 | 7K1791 |
| 4 | Hex Head Nut | | Steel | 2 | | 13K89 | |
| 5 | Mounting Clamp Half | | Cast Iron | | 1K323 | | |
| 6 | Hex Head Screw | | Steel | | 13L43 | | |
| 7 | Bearing Spider | | GF Polycarbonate | 1 | 7K1372 | | |
| 8 | Bearing | | Urethane | | 7K1740 | | |
| 9 | Adapter Ring | | 300 SS | | 4K464 | | |
| 10 | Klip Ring | | 301 SS | | 7K817 | | |
| 11 | Bowl | | 304 SS | | 7K18 | | |
| 12 | Impeller | | GF Polycarbonate | | = Staging | 7K19 | |
| 13 | Diffuser | | | | | 7K20 | |
| 14 | Shim | | | Varies | 7K155 | | |
| 15 | Shaft/Coupling Assembly | | 304 SS | 1 | 1 | 7K1792 | |
| | | | | | 1½ | 7K1793 | |
| | | | | | 2 | 7K1794 | |
| | | | | | 3 | 7K1795 | |
| 16 | Spacer | | GF Polycarbonate | All | 4L443 | | |
| 17 | Mechanical Seal | | See Mechanical Seal Chart on page 1 in the VB Numbering System | | | | |
| 18 | Motor Adapter | | Cast Iron | 1 | All | 1K615 | |
| | | | 304 SS | | | 1K348 | |
| 19 | Screw, Motor to Motor Adapter | | Steel | 4 | | 13K69 | |
| 20 | Pipe Plug | | 316 SS | 1 | | 6K2 | |
| | | | | | | 6K141 | |
| 21 | O-Ring Coupling | Standard BUNA | 1 | 5K283 | | | |
| | | Optional EPR | | 5K284 | | | |
| | | Optional Viton | | 5K285 | | | |
| 22 | Deflector | | BUNA | | | 5K7 | |
| 23 | Motor | | See Repair Part Motor List | | | | |



25VB CLOSE-COUPLED MOTORS 3500 RPM

| HP | Three-Phase, 60 Hz, 208-230/460 V**, 56J Frame | | | | | |
|----|--|-----------|------------|------------------------------|-------------|------------|
| | Open, Drip-Proof | | | Totally Enclosed, Fan Cooled | | |
| | Order No. | Max. Amps | Wt. (lbs.) | Order No. | Max. Amps | Wt. (lbs.) |
| 1 | | | | C06876GRM | 3.2-3.2/1.6 | 21 |
| 1½ | | | | C07876GRM | 4.5-4.8/2.4 | 27 |
| 2 | | | | C08876GRM | 5.6-5.4/2.7 | 33 |
| 3 | | | | C09876GRM | 8/4 | 38 |

Note: * 3HP TEFC motors are 230/460 Volt only.

